



# CLOUDBREAK

## DISCOVERY PLC

LON CDL

[cloudbreakdiscovery.com](https://cloudbreakdiscovery.com)

### NORTHERN TREASURE PROJECT OVERVIEW

AUGUST 2021

# DISCLAIMER

The information contained herein has been prepared to assist interested parties in making their own evaluation of Cloudbreak Discovery PLC (“Allied” or the “Company”) and does not purport to contain all of the information that a prospective investor or partner may desire. In all cases, interested parties should conduct their own investigation and analysis of Cloudbreak. Neither the Company nor any of its affiliates make any representation or warranty as to the accuracy or completeness of the information presented. This includes, without limitation, any estimates or projections, and neither the Company nor its affiliates shall have any liability for any statements (expressed or implied) contained in, or for any omissions from, this presentation or any other written or oral communications transmitted to the recipient hereof in the course of its evaluation of the Company, nor should anything contained herein be relied upon as a promise, representation or warranty regarding future events or performance of the Company. Moreover, the information contained herein speaks as of the date hereof; the Company undertakes no obligation to update any such information. The only statements that will have any legal effect will be those specifically contained or referred to, and then only to the extent provided, in definitive legal documentation.

**Forward Looking Statements and Cautionary Notes** – This presentation contains “forward-looking information” within the meaning of the Canadian securities laws. Statements, other than statements of historical fact, may constitute forward looking information and include, without limitation, statements about: anticipated timing and content of upcoming work programs, geological interpretations, receipt of property titles, and potential copper recovery processes; anticipated dates for receipt of permits, approvals and other milestones; anticipated Results of drilling programs, feasibility studies and other analyses; anticipated availability and terms of future financing; future production, operating and capital costs; and operating or financial performance. Information concerning potential contingent copper resource estimates also may be deemed to be forward-looking information in that it reflects a prediction of the copper bearing zones that would be encountered if a copper structure were developed and produced. With respect to the forward-looking information contained in this presentation, the Company has made numerous assumptions regarding, among other things, the geological, metallurgical, engineering, financial and economic advice that the Company has received is reliable and are based upon practices and methodologies which are consistent with industry standards. While the Company considers these assumptions to be reasonable, these assumptions are inherently subject to significant uncertainties and contingencies. Additionally, there are known and unknown risk factors which could cause the Company's actual results, performance or achievements to be materially different from any future results, performance or achievements expressed or implied by the forward-looking information contained herein. Known risk factors include, among others: fluctuations in commodity prices and currency exchange rates; uncertainties relating to interpretation of well results and the geology, continuity and grade of copper deposits; uncertainty of estimates of capital and operating costs, recovery rates, production estimates and estimated economic return; the need for cooperation of government agencies in the exploration and development of properties and the issuance of required permits; the need to obtain additional financing to develop properties and uncertainty as to the availability and terms of future financing; the possibility of delay in exploration or development programs or in construction projects and uncertainty of meeting anticipated program milestones; uncertainty as to timely availability of permits and other governmental approvals; increased costs and restrictions on operations due to compliance with environmental and other requirements; increased costs affecting the metals industry and increased competition in the metals industry for properties, qualified personnel, and management. All forward-looking information herein is qualified in its entirety by this cautionary statement, and the Company disclaims any obligation to revise or update any such forward-looking information or to publicly announce the result of any revisions to any of the forward-looking information contained herein to reflect future results, events or developments, except as required by law.

**Qualified Person** – Technical information contained in this presentation has been reviewed and approved by Cam Bartsch, M.Sc., P.Geo., a “Qualified Person” as defined by National Instrument 43-101 – Standards of Disclosure for Mineral Projects.



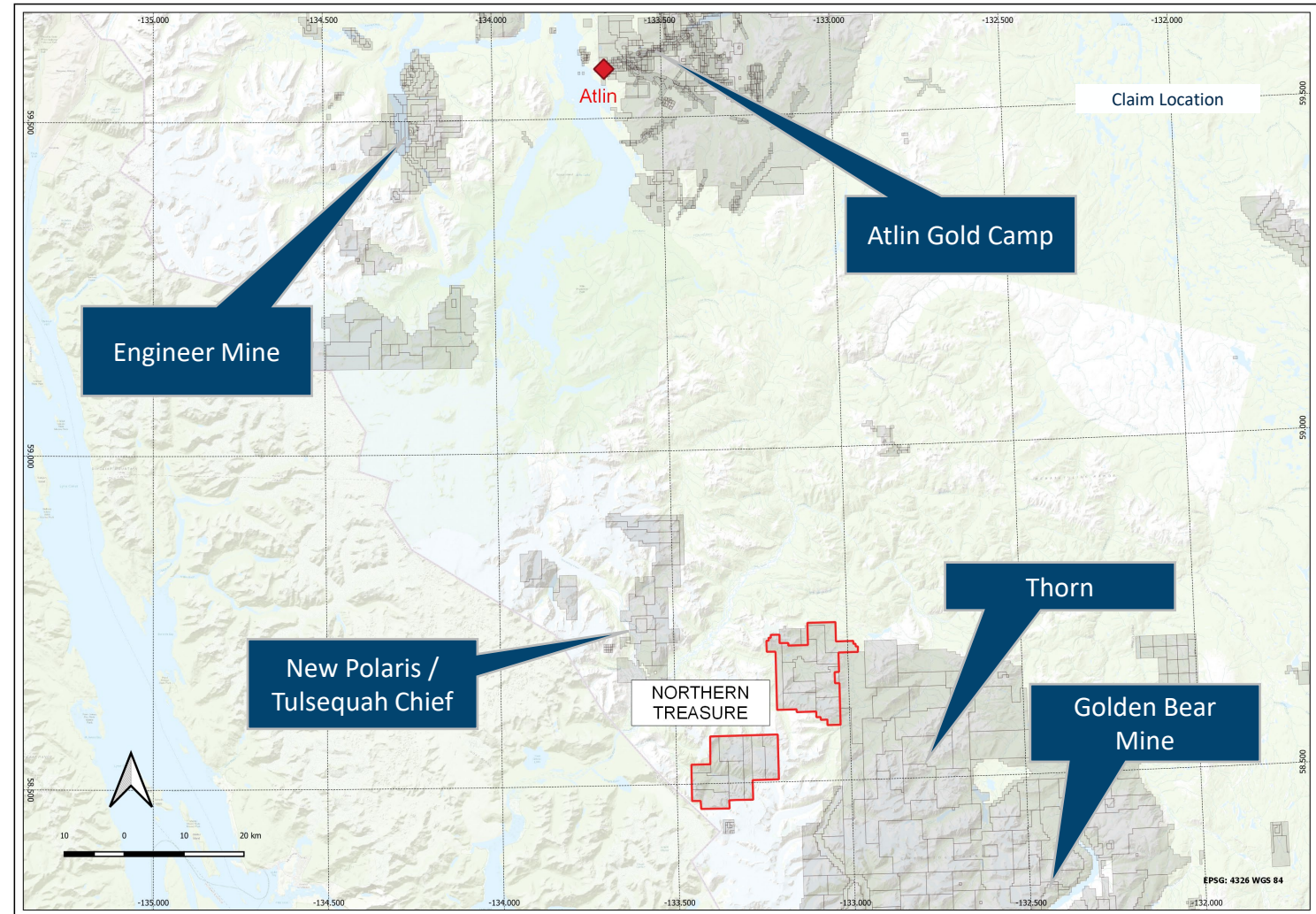
## NORTHERN TREASURE – PART OF THE ATLIN TARGETING INITIATIVE

- Focus on Cu(+/- Au-Ag) deposits.
- Open ground along established mineralized trends between Atlin and Telegraph Creek in northwest BC.
- Newly exposed prospective ground resulting from receding glaciers.
- Overlooked or underexplored historic mineral occurrences.
- Similar geological setting and structural preparation to the known deposits in the region.



## AREA HIGHLIGHTS

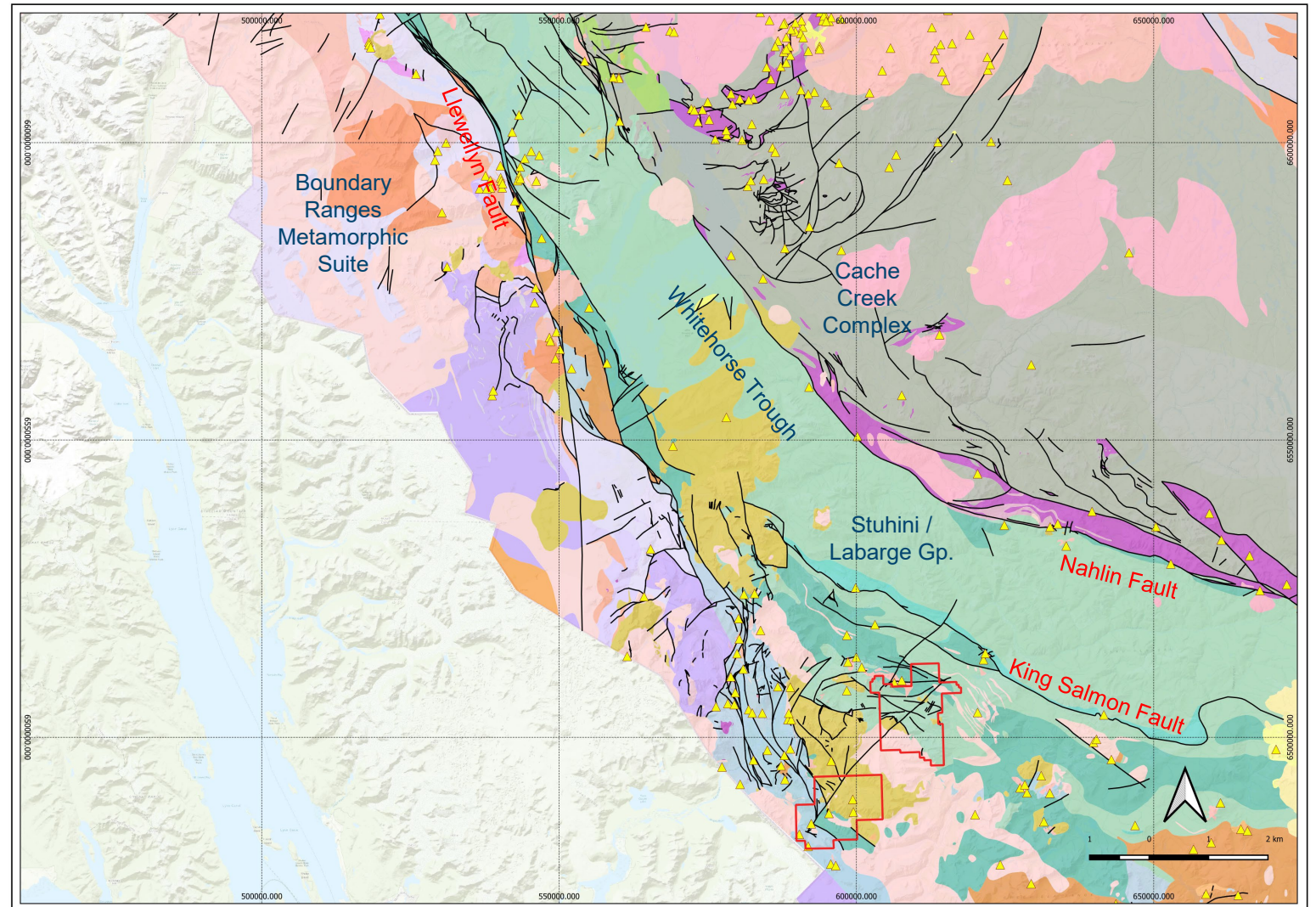
- Thorn Property (Ag-Au-Cu-Pb-Zn)
  - Inferred Resource of 24.4 Moz AgEq ([brixtonmetals.com](http://brixtonmetals.com))
- Atlin Gold Camp (Au)
  - Estimated >1 M oz placer production since 1898, bedrock source not identified
- Others:
  - Engineer Mine (Au-Ag): 10,400t @ 60 g/t Au ([engineergoldmines.com](http://engineergoldmines.com))
  - New Polaris (Au): 1.6Mt @ 10.8 g/t Au (Ind); 1.4Mt @ 10.2 g/t Au (Inf) ([canagoldresources.com](http://canagoldresources.com))
  - Tulsequah Chief (VMS): Produced 933kt @ 3.77 g/t Au, 126.5 g/t Ag, 1.59% Cu, 7% Zn, 1.54% Pb
  - Golden Bear (Au-Ag): Produced 480,000 oz





## AREA GEOLOGY

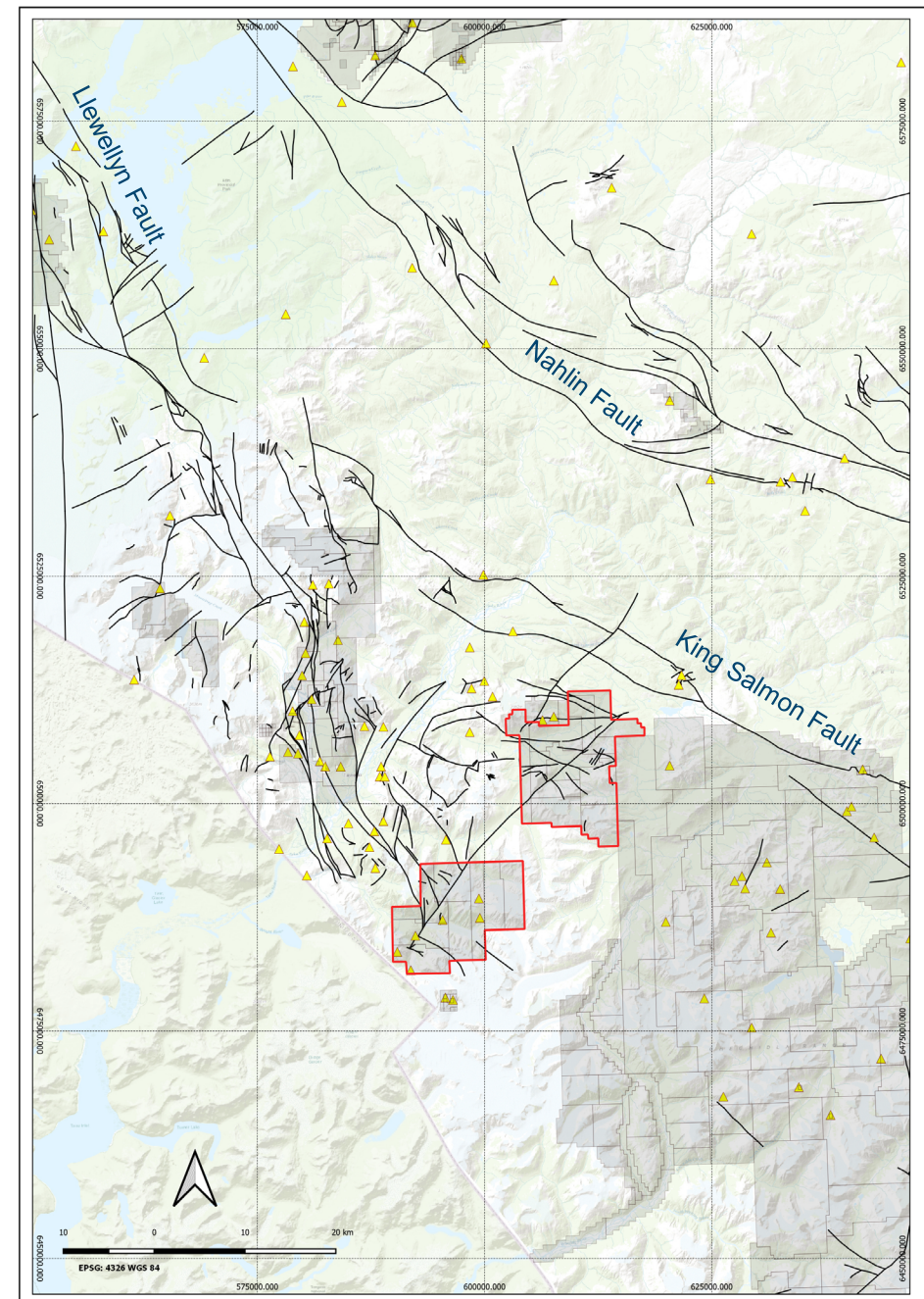
- Western edge of the Intermontane Belt in NW BC, adjacent to the Whitehorse Trough.
- Primarily underlain by volcanic and sedimentary rocks of the Stikine terrane.
- Units are comprised of mafic to intermediate Late Triassic submarine volcanic rocks (Stuhini Gp.) uncomfortably overlain by thick sequences of Early to Middle Jurassic clastic sedimentary rocks including calcareous sandstone, conglomerate, and shale (Labarge Gp.).
- Intruded by Late Cretaceous to Eocene bimodal plutonic rocks.





# STRUCTURE & MINERALIZATION

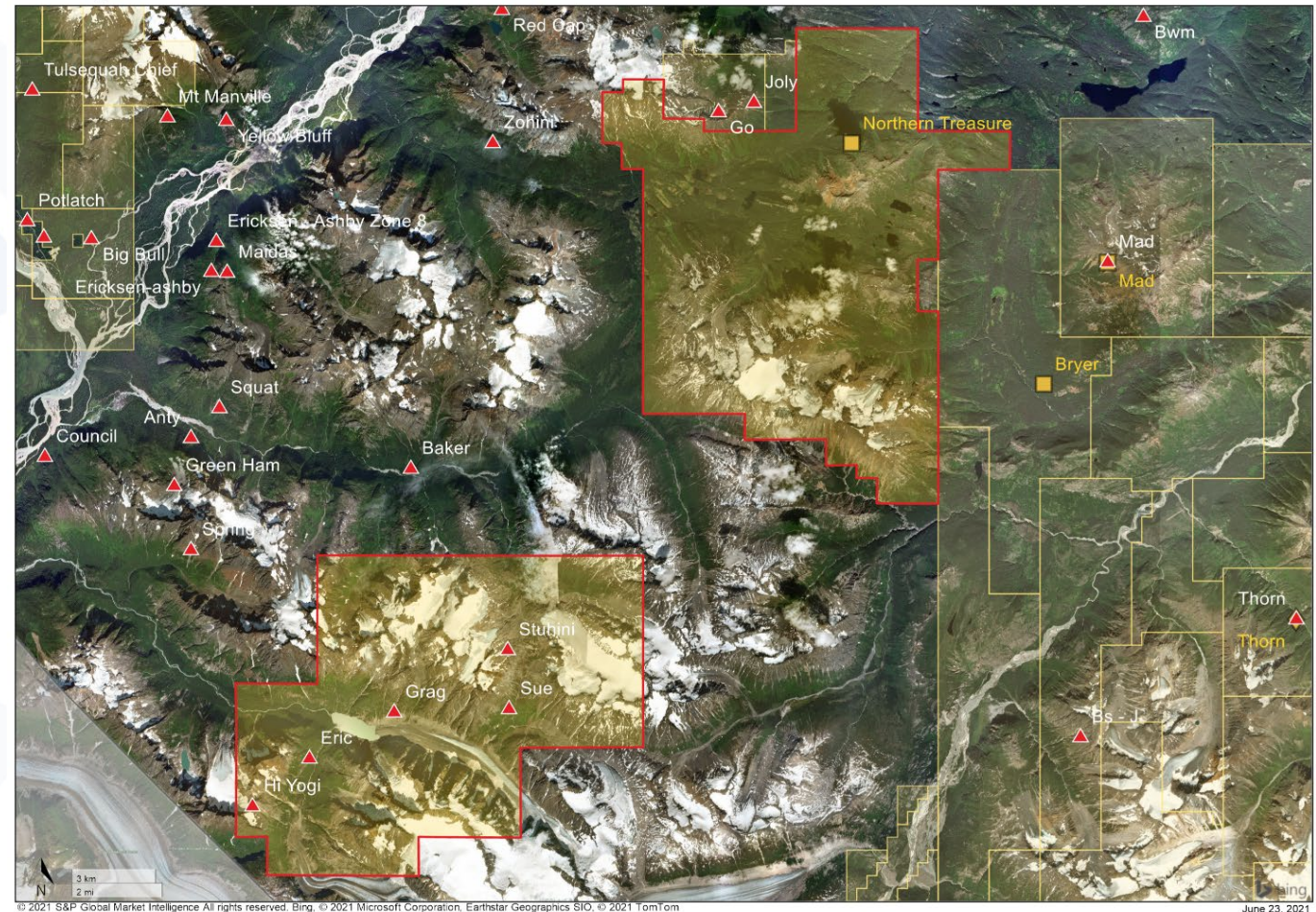
- Boundaries of the Whitehorse Trough are defined by the Nahlin Fault to the east and King Salmon and Lewellyn Faults to the west.
- Numerous base and precious metals deposits spatially associated with first and second order structures of these fault systems.
- Target deposit types include Cu-Au-Ag porphyry, polymetallic epithermal systems, VMS, intrusion-related and sedimentary-hosted Au-Ag.





# NORTHERN TREASURE CLAIM BLOCK

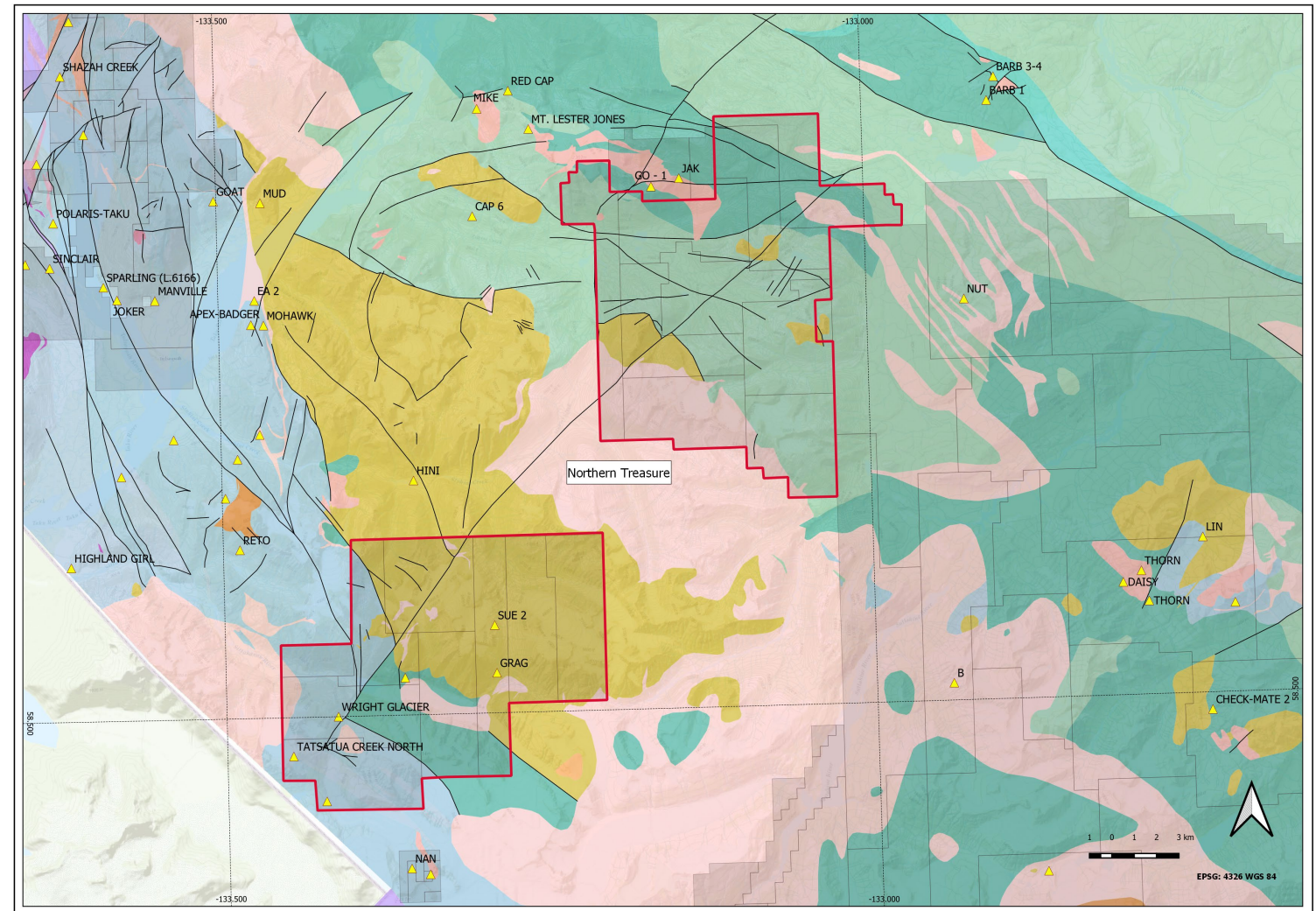
- **Location:** W-NW of Thorn property along trend
- **Claim Size:** 29,580 ha
- **Target:** Porphyry (Cu-Au-Ag-Mo); Sed-hosted (Au-Ag); High Sulphidation (Cu-Au-Ag); Stockwork (Au-Ag), VMS (Cu-Au-Ag-Zn)
- **Regional Analogs:** Camp Creek (porphyry); Thorn - Outlaw (sed-hosted); Thorn - Glenfiddich (high sulphidation); Tulsequah Chief mine and New Polaris mine (VMS)





# NORTHERN TREASURE GEOLOGY

- Triassic Stuhini Gp volcanic and sedimentary rocks in the east (green), Sloko-Hyder plutonic suite (yellow/pink) to the west.
- Minor metamorphosed Paleozoic strata of the Stikine Assemblage (blue), host to VMS deposits. NW structures follow regional trend parallel to the Llewellyn and Nahlin faults, cut by late NE-trending faults.





# NORTHERN TREASURE CLAIM BLOCK

## ■ Mineral Occurrences:

- 104K 144 - Northern Treasure/Lis3 (Au-Ag-Cu): Anomalous gold identified in stream sediment samples. RGS sample returned 602 ppb Au, heavy mineral concentrate stream samples by Gulfside Minerals in 2012 returned up to 5630 ppb Au.
- 104K 050/51 – Stuhini/Sue (Ag-Au-Cu-Mo-Pb-Zn): Two gossanous zones 330m x 25m and 50m x 50m associated with structurally controlled silicification and pyritization. Au in soil values up to 1160 ppb, 19.6 ppm Ag and 3690 ppm As. Galena, sphalerite and bornite in float, bedrock source not identified.
- 104K 068 - Grag (Cu-Ag-Ni): 3 types of sulphide mineralization: Py, Po, Cpy, ga and Sp in silicified volcanics; disseminated Py, Po, Cpy in quartz monzonite intrusion; and sulphide lenses in volcanic host rocks. A 1200 m long gossan was noted with a sample from 1979 returning 3.9 g/t Ag, 0.008% Cu, 0.045% Mo. Has not been looked at since.
- 104K 059 – Wright Glacier/Eric (Cu-Ag-Mo): Paleozoic Stikine rocks intruded by quartz monzonite and associated FSP dykes. Sample from volcanics in 1979 returned 11 g/t Ag, 0.4%Cu and 0.004% Mo.
- 104K 058 - Hi Yogi/Tatsatua Ck. (Ag-Zn-Pb-Cu): Stratiform gossans in Stikine rocks, associated with abundant milky quartz veins. 1980 sampling returned anomalous Ag, Pb, Zn and Cu.
- 104K 057 - Wright Glacier (Mo-Zn): Boulders of Mo-bearing float up to 2 m across occur on terminal moraines of Wright Glacier.



## PROPOSED EXPLORATION

YEAR 1 – Exploration Program	
1.	Multispectral/Aster image analysis <ul style="list-style-type: none"><li>• Identify alteration</li></ul>
2.	Mapping and Prospecting (2 geos – 7 days, heli-supported) <ul style="list-style-type: none"><li>• Follow up on historic showings and remote sensing targets</li></ul>
3.	XRF analysis (1 sampler – 7 days, heli-supported) <ul style="list-style-type: none"><li>• Analysis on remote sensing alteration targets</li></ul>
4.	Geochemical Sampling <ul style="list-style-type: none"><li>• Soils over historic trends at Northern Treasure and Stuhini/Grag</li></ul>
5.	Drill Target Delineation for Phase 2 program



## SUMMARY

The Northern Treasure property exhibits:

- Prospective base and precious metals targets within **historic mining districts**.
- Favourable **geology** and **structure** along trend of the Thorn deposits.
- **Underexplored** high-grade mineral showings.
- **New exposures** of previously glaciated ground.
- Strong potential for **new discoveries** of deposits.





**CLOUDBREAK**  
DISCOVERY PLC

Cloudbreak Discovery Plc

**Kyler Hardy**

Chief Executive Officer

[khardy@cloudbreakdiscovery.com](mailto:khardy@cloudbreakdiscovery.com)

+1 250.877.1394

520-999 West Hastings Street, Box 55,  
Vancouver, BC V6C 2W2

**Cam Bartsch**

Vice President Exploration

[cbartsch@cloudbreakdiscovery.com](mailto:cbartsch@cloudbreakdiscovery.com)

+1 778.268.2103

**LON CDL** [cloudbreakdiscovery.com](http://cloudbreakdiscovery.com)