



CLOUDBREAK

DISCOVERY PLC



LON CDL

cloudbreakdiscovery.com

YAK PROJECT OVERVIEW

JULY 2021

DISCLAIMER

The information contained herein has been prepared to assist interested parties in making their own evaluation of Cloudbreak Discovery PLC (“Allied” or the “Company”) and does not purport to contain all of the information that a prospective investor or partner may desire. In all cases, interested parties should conduct their own investigation and analysis of Cloudbreak. Neither the Company nor any of its affiliates make any representation or warranty as to the accuracy or completeness of the information presented. This includes, without limitation, any estimates or projections, and neither the Company nor its affiliates shall have any liability for any statements (expressed or implied) contained in, or for any omissions from, this presentation or any other written or oral communications transmitted to the recipient hereof in the course of its evaluation of the Company, nor should anything contained herein be relied upon as a promise, representation or warranty regarding future events or performance of the Company. Moreover, the information contained herein speaks as of the date hereof; the Company undertakes no obligation to update any such information. The only statements that will have any legal effect will be those specifically contained or referred to, and then only to the extent provided, in definitive legal documentation.

Forward Looking Statements and Cautionary Notes – This presentation contains “forward-looking information” within the meaning of the Canadian securities laws. Statements, other than statements of historical fact, may constitute forward looking information and include, without limitation, statements about: anticipated timing and content of upcoming work programs, geological interpretations, receipt of property titles, and potential copper recovery processes; anticipated dates for receipt of permits, approvals and other milestones; anticipated Results of drilling programs, feasibility studies and other analyses; anticipated availability and terms of future financing; future production, operating and capital costs; and operating or financial performance. Information concerning potential contingent copper resource estimates also may be deemed to be forward-looking information in that it reflects a prediction of the copper bearing zones that would be encountered if a copper structure were developed and produced. With respect to the forward-looking information contained in this presentation, the Company has made numerous assumptions regarding, among other things, the geological, metallurgical, engineering, financial and economic advice that the Company has received is reliable and are based upon practices and methodologies which are consistent with industry standards. While the Company considers these assumptions to be reasonable, these assumptions are inherently subject to significant uncertainties and contingencies. Additionally, there are known and unknown risk factors which could cause the Company's actual results, performance or achievements to be materially different from any future results, performance or achievements expressed or implied by the forward-looking information contained herein. Known risk factors include, among others: fluctuations in commodity prices and currency exchange rates; uncertainties relating to interpretation of well results and the geology, continuity and grade of copper deposits; uncertainty of estimates of capital and operating costs, recovery rates, production estimates and estimated economic return; the need for cooperation of government agencies in the exploration and development of properties and the issuance of required permits; the need to obtain additional financing to develop properties and uncertainty as to the availability and terms of future financing; the possibility of delay in exploration or development programs or in construction projects and uncertainty of meeting anticipated program milestones; uncertainty as to timely availability of permits and other governmental approvals; increased costs and restrictions on operations due to compliance with environmental and other requirements; increased costs affecting the metals industry and increased competition in the metals industry for properties, qualified personnel, and management. All forward-looking information herein is qualified in its entirety by this cautionary statement, and the Company disclaims any obligation to revise or update any such forward-looking information or to publicly announce the result of any revisions to any of the forward-looking information contained herein to reflect future results, events or developments, except as required by law.

Qualified Person – Technical information contained in this presentation has been reviewed and approved by Cam Bartsch, M.Sc., P.Geo., a “Qualified Person” as defined by National Instrument 43-101 – Standards of Disclosure for Mineral Projects.



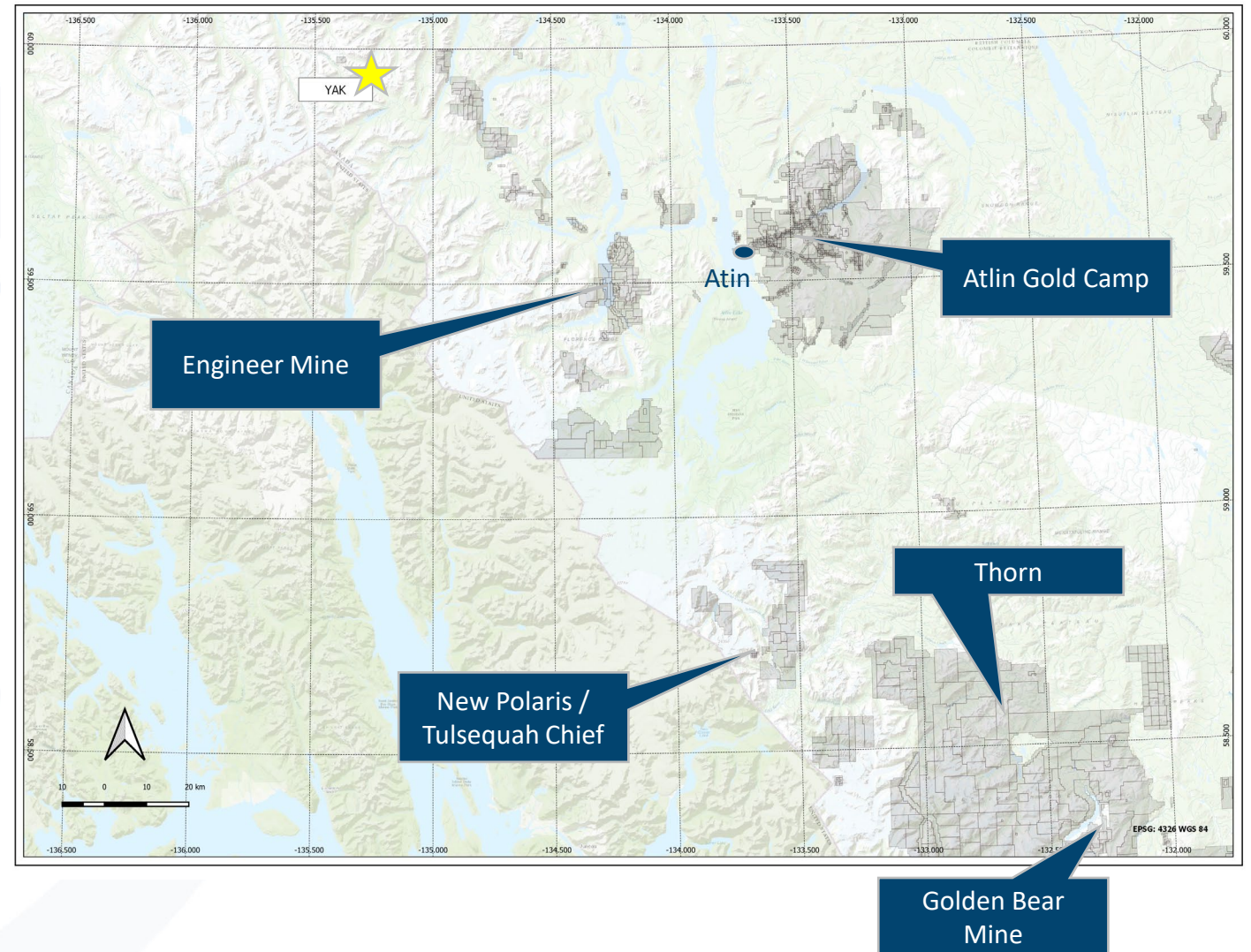
YAK PROJECT – PART OF THE ATLIN TARGETING INITIATIVE

- Focus on Cu(+/- Au-Ag) deposits.
- Open ground along established mineralized trends from Yukon Border/Atlin to Telegraph Creek in northwest BC.
- Newly exposed prospective ground resulting from receding glaciers.
- Overlooked or underexplored historic mineral occurrences.
- Similar geological setting and structural preparation to the known deposits in the region.



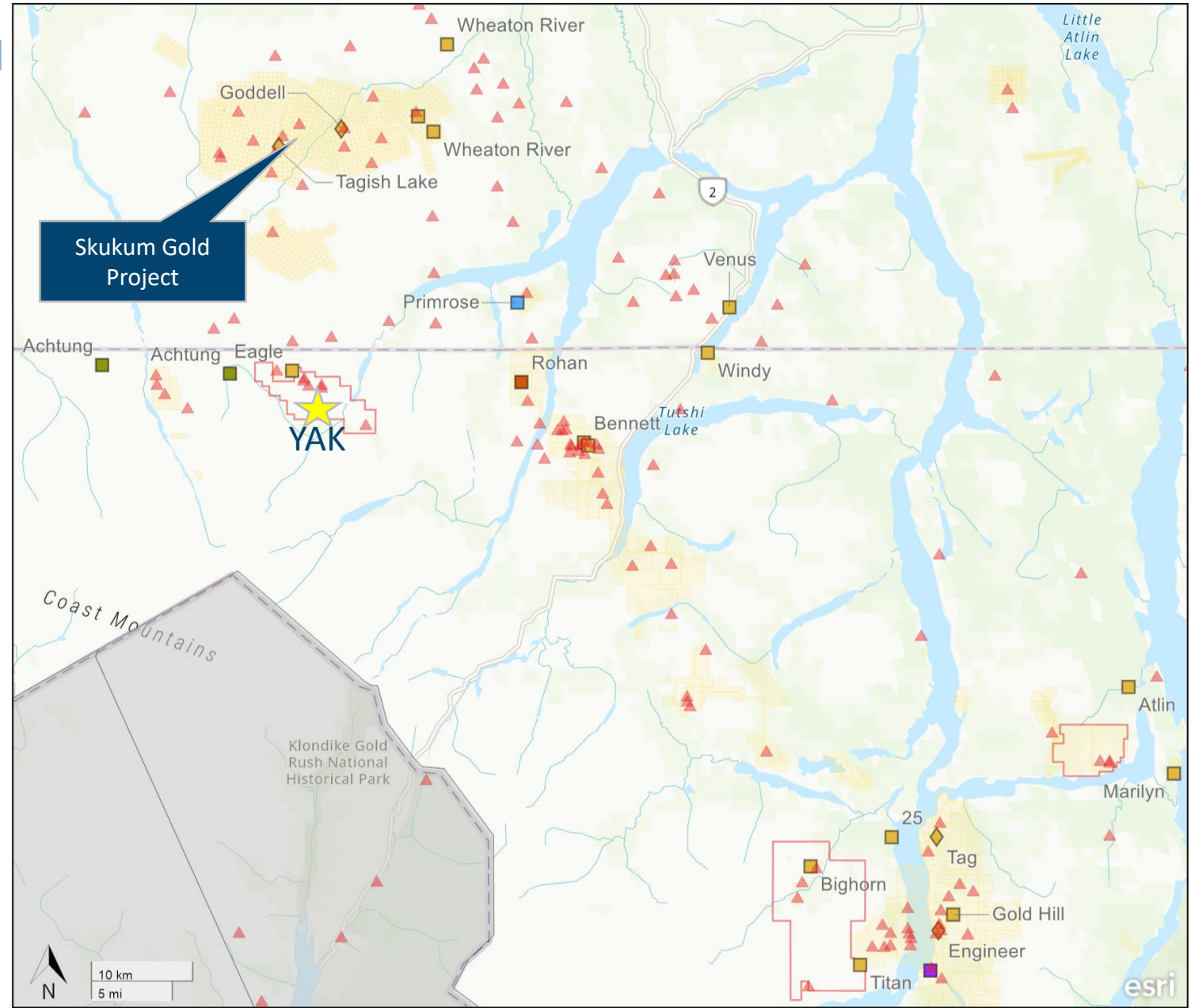
AREA HIGHLIGHTS - BC

- Thorn Property (Ag-Au-Cu-Pb-Zn)
 - 24.4 Moz AgEq – Brixton 2021
 - Porphyry and epithermal deposits
- Atlin Gold Camp (Au)
 - Estimated >1 M oz placer production since 1898, bedrock source not identified
 - Lode gold and intrusion-related potential
- Engineer Mine (Au-Ag): 10,400t @ 60 g/t Au (EAU:TSX-V)
- New Polaris (Au): >1 M oz Au (Canagold 2019)
- Tulsequah Chief (VMS): Produced 933kt @ 3.77 g/t Au, 126.5 g/t Ag, 1.59% Cu, 7% Zn, 1.54% Pb
- Golden Bear (Au-Ag): Produced 480,000 oz



AREA HIGHLIGHTS - YUKON

- Skukum Gold Project (Whitehorse Gold Corp):
- Structurally controlled Ag-Ag +/- base metal bearing veins and breccias
- Hosted within Eocene Skukum Gp. volcanic rocks and Cretaceous Coast Plutonic Complex
- 1.1 Mt @ >100 g/t Ag and 9.28 g/t Au
- ~ 2M oz Ag
- Most likely regional analog for YAK



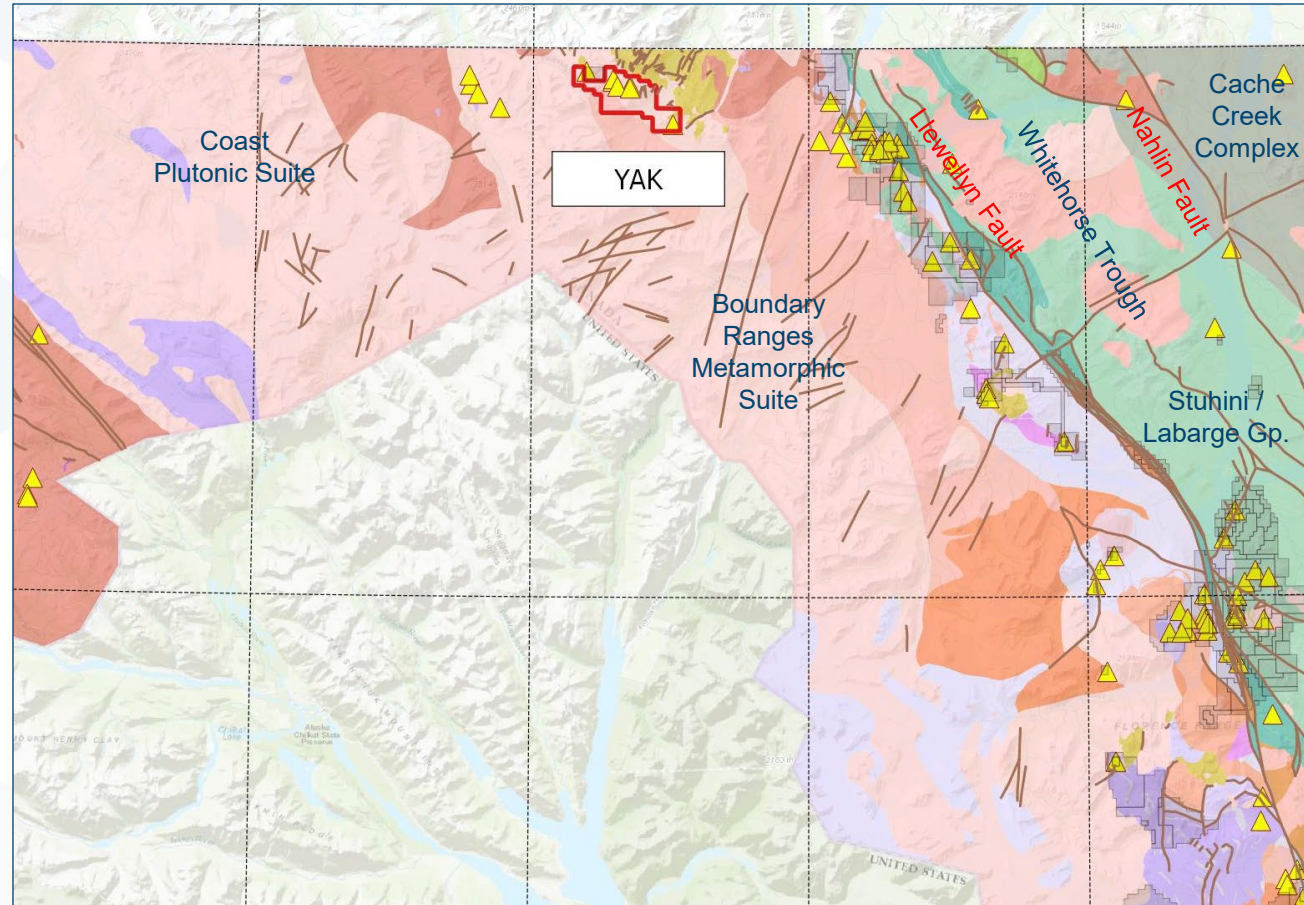
© 2021 S&P Global Market Intelligence All rights reserved. State of Alaska, Esri Canada, Esri, HERE, Garmin, FAO, METI/NASA, USGS, EPA, NPS

July 27, 2021



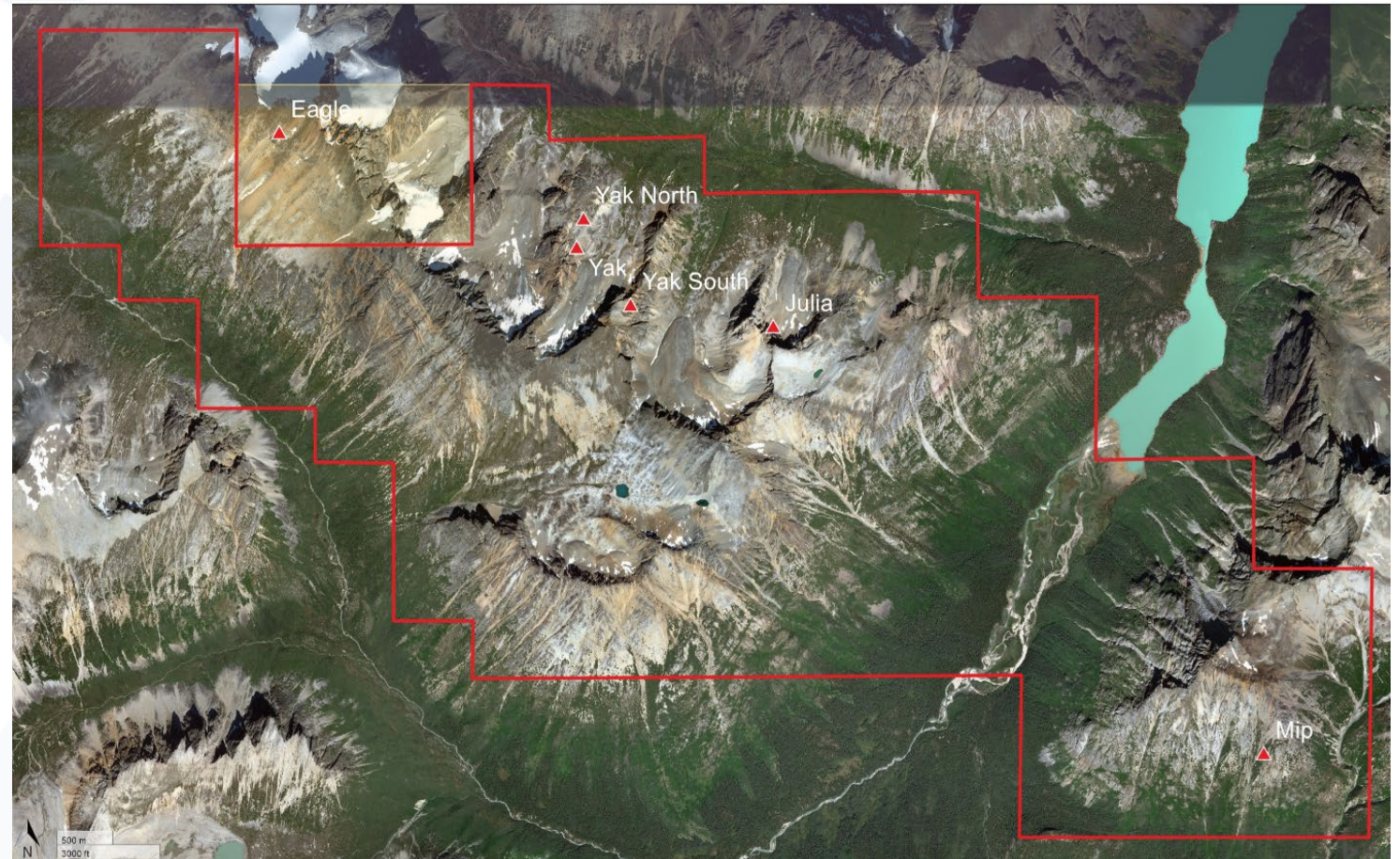
REGIONAL GEOLOGY

- Located within the Intermontane Belt in NW BC.
- Comprises southern margin of the Bennet Lake Caldera, an Eocene volcanic centre.
- Primarily underlain by Cretaceous Coast Plutonic Suite rocks – granodiorite and quartz monzonite and lesser coeval intermediate volcanic rocks.
- Oldest rocks in the area comprise Paleozoic gneiss, assigned to the Nisling Terrane, and Jurassic andesitic volcanic and siliciclastic sedimentary rocks of the Stikine Terrane and Whitehorse Trough



YAK CLAIM BLOCK

- **Location:** BC-Yukon border, 40 km SW of Carcross
- **Claim Size:** 3,116 ha
- **Targets:** Low Sulphidation Epithermal Ag-Au, Polymetallic, Mesothermal Lode Gold
- **Regional Analogs:** Skukum Gold/Tagish Lake deposits
- **History:** Limited prospecting done in the 1980's discovered very high Ag grades (+/- Au-Cu-Pb-Zn). Much of the sampling was from talus at base of ice-covered slopes, ice has receded significantly since then.



YAK CLAIM BLOCK

■ Mineral Occurrences:

- YAK (Ag-Au-Cu-Pb-Zn): 0.2 – 2 m wide quartz veins, striking 065 and steeply north-dipping, contain pyrite, galena, arsenopyrite, sphalerite and chalcopyrite. Samples from returned up to 1.3 oz/t Au and 418 oz/t Ag.
- Julia (Ag-Au-Cu-Pb-Zn): Vuggy quartz veins, coxcomb texture. Up to 142 oz/t Ag in float.
- Mip (Ag-Au-Cu-Pb-Zn): NE-trending veins, gossan with boxwork weathering. Samples returned up to 66.5 g/t Ag, 0.75 g/t Au, 0.78% Pb, 0.1% Cu and 0.24% Zn.
- Eagle (adjacent): Mineralized boulder at base of icefield in 1988 sample returned 14,356 g/t Ag and 44.5 g/t Au, source not identified.



PROPOSED EXPLORATION

YEAR 1 – Exploration Program	
1.	Multispectral/Aster image analysis <ul style="list-style-type: none">• Identify alteration
2.	Mapping and Prospecting (2 geos – 7 days, heli-supported) <ul style="list-style-type: none">• Follow up on historic showings and remote sensing targets
3.	XRF analysis (1 sampler – 7 days, heli-supported) <ul style="list-style-type: none">• Analysis on remote sensing alteration targets
4.	Geochemical Sampling <ul style="list-style-type: none">• Soils over historic trends at Northern Treasure and Stuhini/Grag
5.	Drill Target Delineation for Phase 2 program



SUMMARY

The YAK property exhibits:

- Prospective Ag (+/-Au,Cu,Pb,Zn) target in **historic mining district**.
- Favourable **geology** and **structure** along trend of established deposits.
- **Underexplored** high-grade mineral showings.
- **New exposures** of previously glaciated ground.
- Strong potential for **new discoveries**.





CLOUDBREAK
DISCOVERY PLC

Cloudbreak Discovery Plc

Kyler Hardy

Chief Executive Officer

khardy@cloudbreakdiscovery.com

+1 250.877.1394

520-999 West Hastings Street, Box 55,
Vancouver, BC V6C 2W2

Cam Bartsch

Vice President Exploration

cbartsch@cloudbreakdiscovery.com

+1 778.268.2103

LON CDL cloudbreakdiscovery.com